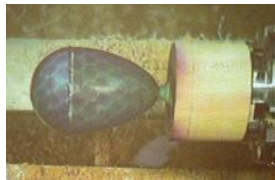
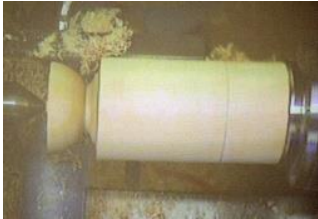


## June 2016 Meeting - Tony Walton

Tony stated that he was going to make a box but not in the conventional manner. As he was not going to be interested in any grain matching then he could make the box in this unusual way.

He started with the blank mounted between centres and then roughed it to a cylinder. He cut a tenon on one end to fit the chuck. This was then mounted in the chuck, the cylinder trued up and then Tony marked out the box roughly in the proportion of one third for the lid and two thirds for the body. He then began to turn the lid in situ; the



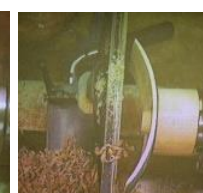
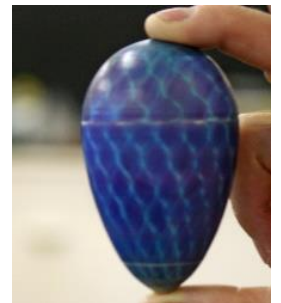
lid was to be dome shaped. Plenty of support was left behind the dome to make hollowing out safer. A bowl scraper was used to form the recess for the lid to fit on the base and the hollowing continued to completion. Tony had some vibration during hollowing and offered the following advice - ease off the cut and adjust the angle of cut

and this should minimise the vibration. The finishing cuts on the inside of the dome were accomplished with a round nosed scraper. The outside of the dome was further shaped and parted off.

A spigot, to jam fit the recess in the lid, was cut on the base piece remaining in the chuck and the lid jammed on. With gentle cuts it was now possible for Tony to complete the turning of the lid. The diameter of the blank was reduced to match the lid and the outside shape rough turned, again leaving a good amount of wood to support the hollowing. The lid was removed and a hole drilled using a spindle gouge. This hole was then opened out to the desired wall thickness. This operation, drilling and the opening out, was repeated until the final depth was achieved. The lid was replaced and the final shaping of the outside was completed, leaving a small spigot supporting the piece.

With lathe set at a very low speed Tony used an airbrush and a blue Chestnut Spirit Stain to colour the box all-over. He then used some of the plastic mesh, that Simon Hope uses to

protect his tools for sale, to stretch over the sprayed box. He secured it at both ends and proceeded to spray over the piece with some purple stain. When the mesh was removed a nice hexagonal pattern had been produced. Tony said that he keeps his eyes open for all manner of odd pieces that can be used as masks to produce various paint effects. The final coating was an acrylic lacquer to seal everything.



To make the stand for the box Tony had pre-drilled a block of wood and then he turned a spigot to fit on the remaining piece in the chuck. He used a hammer to force fit the block

onto the spigot. It was essential that it was a tight fit. He then turned a gentle curve on the face of the block, starting the cut in the centre and working towards the rim, similar to shaping a shallow bowl. Care has to be taken as this involves "air turning" and fingers and knuckles need to be kept away from the spinning wood. When the curve was complete the piece was removed, turned around and replaced on the spigot. Starting from the outside the block was hollowed to get an even thickness on the curve. Bulk was left around the spigot as long as possible for safety. When the turning was complete the stand was carefully removed from the spigot and decorated by positioning stencils and giving them a light spray with the airbrush.

This was an interesting demonstration and opened my eyes to some interesting possibilities. Thank you Tony.